

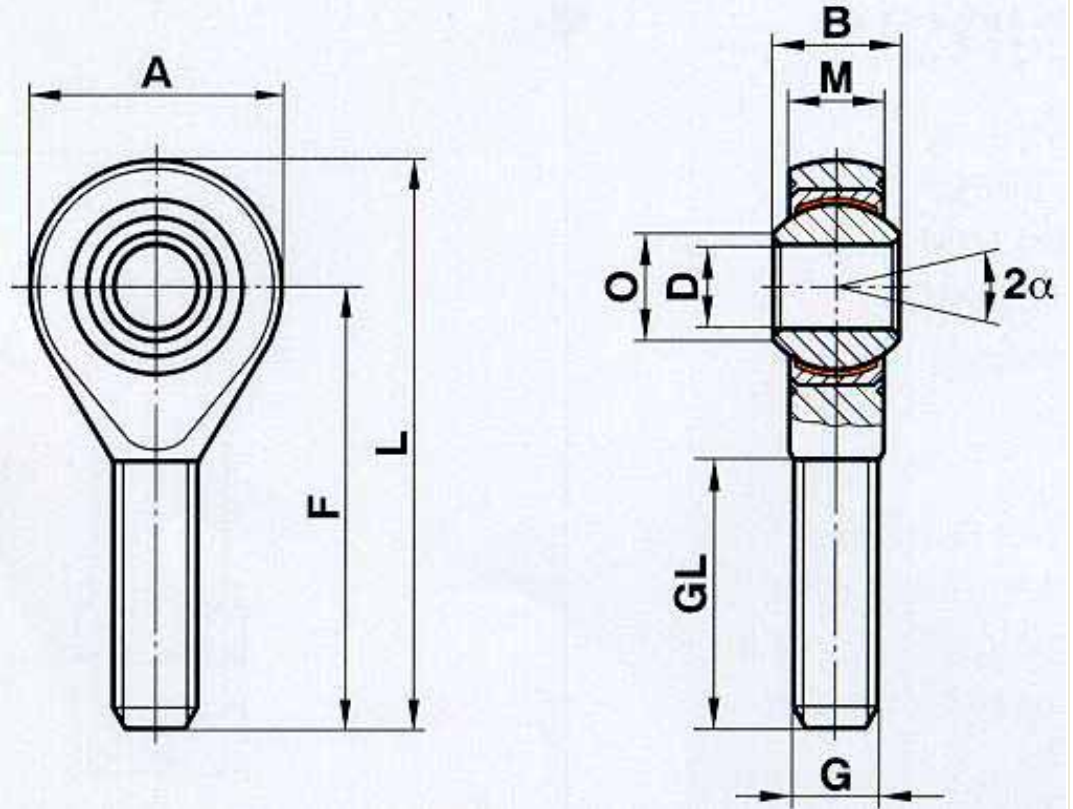
## Rod Ends Series K - maintenance free

Series

# GAXSW

Rod Ends with male thread made from heat-treated steel, zinc plated, with PTFE liner (maintenance free).

For use at lower revs and high pressure and tension loads.



Size (D)	B	M	A	F	L	O	G	GL	Static load C <sub>0</sub> kN	Dynamic load C kN	Limiting speed rev/min	Weight gram	Weight lb.
<u>6</u>	9	6,75	20	36	46	8,9	M 6	22	9,8	9,3	530	20	0,0441
<u>8</u>	12	9,00	24	42	54	10,4	M 8	25	19,5	16,7	420	33	0,072765
<u>10</u>	14	10,50	28	48	62	12,9	M 10	29	31,4	23,4	350	56	0,12348
<u>12</u>	16	12,00	32	54	70	15,4	M 12	33	42,2	32,0	300	87	0,191835
<u>14</u>	19	13,50	36	60	78	16,8	M 14	38	56,9	41,9	260	129	0,284445
<u>16</u>	21	15,00	42	66	87	19,3	M 16	40	67,7	52,7	230	189	0,416745
<u>18</u>	23	16,50	46	72	95	21,8	M 18x1,5	44	81,4	63,8	210	267	0,588735
<u>20</u>	25	18,00	50	78	103	24,3	M 20x1,5	47	93,7	78,1	190	348	0,76734
<u>22</u>	28	20,00	54	84	111	25,8	M 22x1,5	51	113,8	97,2	170	443	0,976815
<u>25</u>	31	22,00	60	94	124	29,6	M 24x2	58	135,4	122,1	150	600	1,323
<u>30</u>	37	25,00	70	110	145	34,8	M 30x2	71	184,4	168,4	130	1030	2,27115

Materials:

Housing: heat-treated steel to 42CrMo4, forged

Insert: free-cutting steel to 9SMnPb28K with PTFE liner, bonded to the inner surface

Ball: bearing steel to 100Cr6, hardened, ground, polished

This series is also available sealed (-2RS) or with threaded bolt (-BO).