

advantage solid discs

Options

- DS254/10/45-06/148:** Disc Ø254 x 9.6mm
- DS265/08/42-06/165:** Disc Ø265 x 8.0mm
- DS280/08/44-08/177:** Disc Ø280 x 8.0mm
- DS280/10/44-08/177:** Disc Ø280 x 9.6mm
- DS290/10/44-08/184:** Disc Ø290 x 9.6mm
- DS300/11/42-10/200:** Disc Ø300 x 11mm

Key features and benefits

- Cast iron alloy unique to Alcon – increased friction, resistance to thermal shock and wear performance
- Disc not handed due to groove design
- Grooved friction face – aids removal of pad dust and gasses
- Lightweight disc – low moment of inertia
- Typical applications are rear of touring car/rally car, all round on single seaters

Specification

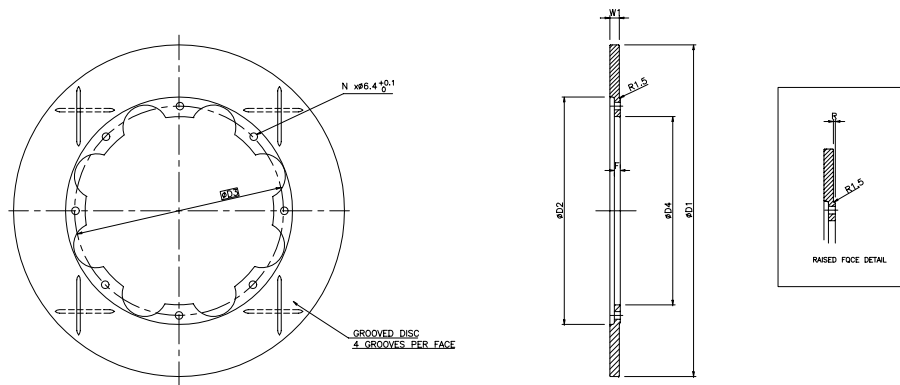
- To be used in conjunction with full area or short profile R-type pad & caliper
- 4 grooves
- Ø6.4mm mounting holes for ¼ UNF bolts to enable fitment to rigid or floating bells

advantage solid discs

Installation

Discs are not handed

Installation dimensions



Part numbers advantage reference	Dimensions (mm)								weight kg
	D1	D2	D3	D4	N	W	F	R	
DS254/10/45-06/148	254	164	148	130	6	9.6	5		2.2
DS265/08/42-06/165	265	180	165	151	6	8	4.5		1.9
DS280/08/44-08/177	280	192	176.75	159	8	8	5	0.8	2.0
DS280/10/44-08/177	280	194	176.75	159	8	9.6	4.6		2.4
DS290/10/44-08/184	290	202	184.2	169	8	9.6	4.6		2.6
DS300/11/42-10/200	300	216	200	165	10	11	6		2.9

Every effort has been made during the preparation of this literature to ensure that the information provided is correct. However, our policy of continual product development means that we must reserve the right to change specifications without notice.

If you require further details of this or any other Alcon product, we will be pleased to provide the appropriate information.

We can also advise on the suitability of particular products in relation to specific applications.

E&OE